

JUNIOR MARKET GOATS

MAY ARRIVE	IN PLACE	SHOW DATE	RELEASE
Sunday, October 10	Sunday, October 10	Monday, October 11	After Judging
8:00 A.M.	12 NOON	9:00 A.M.	Is Complete

JUDGE: IZZY CARDENAS

SHOW SUPERINTENDENT: KATHERINE GUIDRY

MARKET GOAT WEIGHT LIMITS: MINIMUM – 50 LBS. / MAXIMUM – NONE
FIVE POUND TOLERANT WEIGHBACK ON SHOW DAY

SPECIAL AWARDS

- **THE ARKANSAS STATE FAIR** will award a Grand Champion Banner & a Grand Champion Rosette to the Grand Champion Junior Market Goat.
- **THE ARKANSAS STATE FAIR** will award a Reserve Grand Champion Banner & a Reserve Grand Champion Rosette to the Reserve Grand Champion Junior Market Goat.
- **THE ARKANSAS STATE FAIR** will present to the Division Champions a Division Champion Rosette.
- **THE ARKANSAS MEAT GOAT ASSOCIATION** will award an official ASF belt buckle to the Grand Champion Market Goat.
- **SOUTHWEST ARKANSAS EQUIPMENT, LLC** will award an official ASF belt buckle to the Reserve Champion Junior Market Goat.



PREMIUMS OFFERED

INDIVIDUAL CLASSES DIVIDED BY WEIGHT
\$198 PREMIUM MONEY OFFERED PER CLASS

1 st	2 nd	3 rd	4 th	5 th	6 th	7 th	8 th	9 th	10 th
\$30	\$28	\$26	\$24	\$20	\$18	\$16	\$14	\$12	\$10

MARKET GOAT ENTRY DEADLINES & REQUIREMENTS

Animal ID Kit Order (Late): July 6 until Midnight, July 12 - \$40 per Kit

Online Nomination: Midnight, July 20 – FREE

Online Nomination: July 21 until Midnight, August 4 - \$20 per head

DNA Submitted to ASF: July 21 – FREE (*Must be certified mail – return receipt requested*)

Market Goat Ownership Deadline is **July 12, 2010**. Each exhibitor may nominate up to 6 goats and is limited to 3 animals in the show or on the fairgrounds. All goats must wear a Scrapie identification ear tag and an ASF Ear Tag. Exhibitor must submit a DNA sample and must be nominated online according to the appropriate schedule and fees. All questions regarding animal health requirements should be directed to your local veterinarian or Arkansas Livestock & Poultry Commission at 501-907-2400 – Attention Dr. Pat Badley, AR State Veterinarian.

Show classes will be divided by weight. All animals may be tested for various drugs and are subject to inspection at any time while on the fairgrounds.

SPECIAL RULES

All General Rules and Regulations and Junior Show specific rules for ASF apply to this show. Read all rules and regulations prior to arriving at show including PROHIBITED ACTS found in the General Rules and Regulations. All exhibitors are required to read and abide by the IAFE National Code of Show Ring Ethics.

All Special Rules and Regulations found in Market Animal Nomination Information apply. This information is available at www.arkansasstatefair.com. The Nomination Information is distributed by the Livestock Office in late February or early March.

All Market Goats will be processed from 11 AM until 2 PM on Sunday, October 10. Goats must be uniformly shorn 3/8 inch or less above the knees and hocks prior to entering the processing line. Minimum weight is 50 pounds. There is no maximum weight. Exhibitors will weigh their own goat and declare show weight on processing card. Only ASF Scales are allowed on the Fairgrounds. Scales will be placed in the Equestrian Center for exhibitors to use for declaring show weight. Exhibitors must pick up a Market Goat Show Card when lining up for processing. This completed card must be turned into processing clerks at the end of the processing line with the show weight of the goat declared. 2 PM on Sunday, October 10 is the deadline for cards to be turned in to show officials. If no card has been received by this time, the goat will not be eligible for competition. Show classes will be divided by weight and aligned in show ring by weight from lightest to heaviest in each class. There will be a five pound weigh back on all animals that qualify for the division sale order drives. Procedures will be announced from the Superintendents table at the show.

Fitting, grooming and care of all junior livestock entries is to be performed solely by the exhibitor whose name appears on the entry. Exhibitors may be assisted only by their immediate family (which includes Parents, Permanent Legal Guardians when documentation of guardianship is provided to ASF, siblings, aunts, uncles, and grandparents); the exhibitor's County Extension Agent and/or FFA Instructor and fellow exhibitors who have an entry in the ASF Junior Livestock Show. The exhibitor must be present at all times during fitting when assistance is being provided. At no time shall an exhibitor provide payment in any form to anyone assisting in the grooming of an animal. No artificial coloring is allowed.

All animals are not to be moved from their assigned pen, stall or tie out space between the hours of 11 PM and 4 AM unless an official move-in or move-out is listed on the schedule for a species. Exhibitor access to animals during this time will be permitted. Animals are to be on display inside the Barns or in designated areas. Animals are not allowed to be housed inside livestock trailers except when being transported at appropriate time. At no time shall an animal enter a barn where different species are to be or are currently housed. For Example: Swine shall be limited to the swine barn and are not allowed in any other barn.

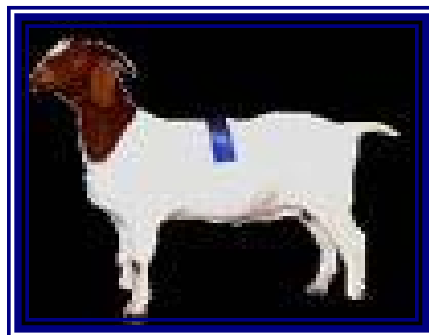
Either wethers or does may participate. Animals participating in the dairy breed shows are ineligible for the market show. Market goats meeting percentage requirements may also enter the Boer Goat Show. Separate entry is required.

All goats must have baby teeth at the show. Goats selected for weigh back in each class will be mouthed. Goats with physical evidence of permanent incisors breaking through the gum line will be disqualified from the show.

It is recommended that all market goats be dehorned. Goats with horns are eligible, but the horns must be tipped (no specific length).

The top 12 goats selected by the judge will be consigned to the Junior Livestock Auction.

Showmanship competition will be held following the Market Goat Show on Monday. Only exhibitors that have shown in the Junior Market Goat Show are eligible. Competition will be held in two groups: Junior (Ages 9 – 13) and Senior (Ages 14 and up). Base date for computing age is opening day of 2010 Arkansas State Fair (October 8).



ASF POLICIES AND PROCEDURES FOR DRUG AND IDENTIFICATION (DNA) TESTING

DRUG TESTING POLICY & PENALTY FOR VIOLATIONS

Any exhibitor and all other parties found in violation of the Arkansas Livestock Show Association Drug Policy or the IAFE Show Ring Code of Ethics are subject to penalties as stated in the General Rules and Regulations for the Arkansas State Fair.

The purpose of drug testing at the Arkansas State Fair is to ensure that no animal has an unfair advantage because of drug use. Urine samples will be collected, transported to and analyzed at the state laboratory facilities by and under supervision of authorized personnel of Arkansas Livestock and Poultry Commission.

Some of the ways that drugs can be used to create an unfair advantage are:

1. Masking the signs of pain (for example, drugs that treat lameness).
2. Altering the behavior of an animal (for example, sedatives).
3. Enhancing weight gain or muscle mass (for example, anabolic steroids).

The ASF does not compile a complete and specific list of acceptable drugs, as this list would be very lengthy and constantly changing. Further, we believe this is more appropriately determined by ALPC, and subject to the following basic requirements, as stated in Paragraphs 4 and 5 of the IAFE National Code of Show Ring Ethics, the use of drugs and/or medications for the sole purpose of protecting the health of the animal; and those that will not affect the animal's performance or alter its natural contour, conformation or appearance.

Any exhibitor and all other parties found in violation of the Arkansas Livestock Show Association Drug Policy or the IAFE Show Ring Code of Ethics are subject to penalties as stated in the General Rules and Regulations for the Arkansas State Fair.

IDENTIFICATION (DNA) POLICY AND PENALTY

As a condition for participation in Livestock Shows at the Arkansas State Fair, every exhibitor in the market shows agrees to submit DNA validation/registration samples of any and all animals entered by exhibitor for purposes of identification. Market Shows require that the animal exhibited at the Show be the same as the animal enrolled during the nomination procedure. The Show specifically reserves the right to obtain and maintain hair and/or blood DNA samples and have analysis made on any animal entered for the competition. The conclusion reached by the testing company/laboratories shall be final, without recourse against the Show or its service providers. If the animal's identity (taken at the show) is found to differ from its validation/registration sample, then the exhibitor will forfeit any prize money and/or sale proceeds and may forfeit all rights and privileges of future participation, and will be subject to penalties as stated in the General Rules and Regulations for the Arkansas State Fair.

All incidents of misconduct will be documented by Arkansas State Fair Officials and will be reported to the National Livestock Show & Rodeo Manager's database of IAFE Show Ring Code of Show Ring Ethics offenders. Being reported in this database could impair exhibitor's ability to participate in livestock shows throughout the nation.