

JUNIOR MARKET LAMBS

MAY ARRIVE	IN PLACE	SHOW DATE	RELEASE
Wednesday, October 6	Friday, October 8	Saturday, October 9	Saturday, October 9
8:00 A.M.	8:00 A.M.	8:00 A.M.	Conclusion of show

JUDGE: ALLEN HYBSHA

SHOW SUPERINTENDENT: BOB WAGNER / SHOW ASSISTANT: JB MASSEY
 LAMB WEIGHT LIMITS: MINIMUM – 90 LBS. / MAXIMUM – NONE
 FIVE POUND TOLERANT WEIGHBACK ON SHOW DAY

SPECIAL AWARDS

- **THE ARKANSAS STATE FAIR** will present to the Grand Champion Lamb a Banner and a Rosette.
- **THE ARKANSAS STATE FAIR** will present to the Reserve Grand Champion Lamb a Banner and a Rosette.
- **THE ARKANSAS STATE FAIR** will present to the Division Champions a Division Champion Rosette.
- **FARM BUREAU ARKANSAS** will present to the Grand Champion Lamb an official ASF Belt Buckle.
- **FARM BUREAU ARKANSAS** will present to the Reserve Grand Champion Lamb an official ASF Belt Buckle.
- **SHEEP MAGAZINE** (145 Industrial Dr., Medford, WI 54451) will award three one-year subscriptions to Sheep Magazine to the best “Rookies” showing in the Open Sheep Show, Junior Sheep Show, and the Junior Market Lamb Show. The best “Rookie” will be chosen by the Superintendent(s) of the shows.

PREMIUMS OFFERED

INDIVIDUAL CLASSES DIVIDED BY WEIGHT
\$198 PREMIUM MONEY OFFERED PER CLASS

1 st	2 nd	3 rd	4 th	5 th	6 th	7 th	8 th	9 th	10 th
\$30	\$28	\$26	\$24	\$20	\$18	\$16	\$14	\$12	\$10



MARKET LAMB ENTRY DEADLINES & REQUIREMENTS

Ownership Deadline: July 12

Animal ID Kit Order: Midnight, July 5 - \$22 per Kit – or US postmarked July 5 and prior

Animal ID Kit Order (Late): July 6 until Midnight, July 12 - \$40 per Kit

Online Nomination: Midnight, July 20 – FREE

Online Nomination: July 21 until Midnight, August 4 - \$20 per head

DNA Submitted to ASF: July 21 – FREE (*Must be certified mail – return receipt requested*)

Market Lamb Ownership Deadline is **July 12, 2010**. Each exhibitor may nominate up to 6 lambs and is limited to 3 animals in the show or on the fairgrounds. All lambs must wear a Scrapie identification ear tag and an ASF Ear Tag. Exhibitor must submit a DNA sample and must be nominated online by the appropriate schedule and fees.

All questions regarding animal health requirements should be directed to your local veterinarian or Arkansas Livestock & Poultry Commission at 501-907-2400 – Attention Dr. Pat Badley, AR State Veterinarian.

SPECIAL RULES

All General Rules and Regulations and Junior Show specific rules for ASF apply to this show. Read all rules and regulations prior to arriving at show including the following PROHIBITED ACTS:

- The injection, use, or administration of any drug to the animal that is prohibited by Federal, State, or Local Law or any drug that is used in a manner prohibited by Federal, State or Local Law.
- The injection or internal or external administration of any product or material, whether gas, solid, or liquid, to an animal for the purpose of deception, including concealing, enhancing, or transforming the true conformation, configuration, color, breed, condition or age or by making the animal appear more sound than would otherwise appear.
- Being found in possession of stomach pumping equipment, drench tubes, or any other device that can be used to administer any substance to an animal per os (by esophagus). Treatment of severely sick or dehydrated animals must be pre-approved by ASF Personnel and administered by an ASF approved veterinarian.
- The administration, use or application of any drug or feed additive affecting the central nervous system.
- The administration of diuretics for cosmetic purposes, tissue manipulation, removal, surgical attachment or otherwise to change, conceal, enhance, or transform the true conformation or configuration of the animal. Attaching to the hide foreign objects including hair or hair substitutes, cloth or fiber for the purpose of deception.
- Any physical or physiological attempt to alter the natural musculature or weight by use of injections or ingested material not conducive to the continued health or marketability of bovine, sheep, swine or goat for deception.
- Violations of the Wholesome Meat Act. (Available at www.asfg.net)
- Violations of the International Association of Fairs & Expositions National Code of Show Ring Ethics. (Available at www.asfg.net)
- Violations of the Arkansas State Fair Ownership requirements or Care and Custody rules listed in this premium book. This includes the manipulation of documents or providing false statement as to affect ownership of an animal and its eligibility to be exhibited at Arkansas State Fair.

All exhibitors are required to read and abide by the IAFE National Code of Show Ring Ethics.

All Special Rules and Regulations found in Market Animal Nomination Information apply. This information is available at www.arkansasstatefair.com. The Nomination Information is distributed by the Livestock Office in late February or early March.

Minimum weight is 90 pounds. There is no maximum weight. Exhibitors will declare show weight of lambs. Only ASF scales are allowed on the Fairgrounds. Scales will be placed in the Swine Barn for exhibitors to use. Exhibitors must pick up a Market Lamb Show Card when lining up for processing. A completed Lamb Show Card for every lamb in the show must be turned in to the Lamb Show Superintendent no later than 10 AM on Friday, October 8 with show weight of the lamb declared. Show classes will be divided by weight and aligned in show ring by weight from lightest to heaviest in each class. There will be a five pound weigh back on all animals that qualify for the division sale order drives. Procedures will be announced from the Superintendents table at show.

Junior Market Lambs will be processed on Thursday, October 7 from 2 - 6 PM and continued on Friday, October 8 from 8 AM until 10 AM. All lambs must be clipped (less than 1/8 inch) before processing. All lambs must be slick sheared above the knees. All lambs will be inspected by the State Veterinarian and show cards must be initialed by the inspector before being turned in. Only lambs with a full mouth of baby teeth with no permanent teeth showing will be allowed to show. Lambs exhibiting signs of wool fungus will not be allowed to remain on Fairgrounds. Only one person is allowed with one lamb in processing and inspection area. It is the responsibility of the exhibitor to have lambs processed by the required deadline. The decision of the State Veterinarian is final and not subject to protest.

All animals are not to be moved from their assigned pen, stall or tie out space between the hours of 11 PM and 4 AM. Exhibitor access to animals during this time will be permitted. Animals are to be on display inside the Barns or in designated grooming areas. Animals are not allowed to be housed inside livestock trailers except when being transported at appropriate time. At no time shall an animal enter a barn where different species are to be or are currently housed. For Example: Swine shall be limited to the swine barn and are not allowed in any other barn.

Fitting, grooming and care of all junior livestock entries is to be performed solely by the exhibitor whose name appears on the entry. Exhibitors may be assisted only by their immediate family (which includes Parents, Permanent Legal Guardians when documentation of guardianship is provided to ASF, siblings, aunts, uncles, and grandparents); the exhibitor's County Extension Agent and/or FFA Instructor and fellow exhibitors who have an entry in the ASF Junior Livestock Show. The exhibitor must be present at all times during fitting when assistance is being provided. At no time shall an exhibitor provide payment in any form to anyone assisting in the grooming of an animal. No artificial coloring is allowed.

Junior and Senior Showmanship will be at the conclusion of the show. In order to participate, exhibitor must have been awarded a Super Showman Award in their respective weight class. Juniors are 13 years old and younger on the opening day of the current year Arkansas State Fair. Seniors are 14 and older on the opening day of the current year Arkansas State Fair.

Registered ewes in the market show may also enter the breed show classes. Commercial ewes (two per exhibitor) in the market show may also enter the Commercial Ewe Show. Separate entry is required for each show. Animals consigned to the Junior Livestock Auction are not eligible to participate in either the breed show classes or the Commercial Ewe Show; entry fees are not refundable.

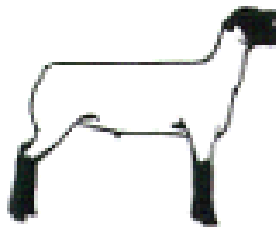
The top 12 lambs selected by the Judge will be consigned to the Junior Livestock Auction.

Main Aisles must be kept clear of feed and equipment at all times. No tarps or covered pens will be allowed. No microwaves, coffee pots, hot plates, etc., will be allowed in the barn. Exhibitors are encouraged to take advantage of Exhibitor Eating Areas provided by the Arkansas State Fair.

All Lambs must be bedded on shavings. Absolutely no straw or mats will be allowed.

Soft muzzles will be allowed.

All animals may be tested for various drugs and are subject to inspection or DNA testing at any time.



ASF POLICIES AND PROCEDURES FOR DRUG AND IDENTIFICATION (DNA) TESTING

DRUG TESTING POLICY & PENALTY FOR VIOLATIONS

Any exhibitor and all other parties found in violation of the Arkansas Livestock Show Association Drug Policy or the IAFE Show Ring Code of Ethics are subject to penalties as stated in the General Rules and Regulations for the Arkansas State Fair.

The purpose of drug testing at the Arkansas State Fair is to ensure that no animal has an unfair advantage because of drug use. Urine samples will be collected, transported to and analyzed at the state laboratory facilities by and under supervision of authorized personnel of Arkansas Livestock and Poultry Commission.

Some of the ways that drugs can be used to create an unfair advantage are:

1. Masking the signs of pain (for example, drugs that treat lameness).
2. Altering the behavior of an animal (for example, sedatives).
3. Enhancing weight gain or muscle mass (for example, anabolic steroids).

The ASF does not compile a complete and specific list of acceptable drugs, as this list would be very lengthy and constantly changing. Further, we believe this is more appropriately determined by ALPC, and subject to the following basic requirements, as stated in Paragraphs 4 and 5 of the IAFE National Code of Show Ring Ethics, the use of drugs and/or medications for the sole purpose of protecting the health of the animal; and those that will not affect the animal's performance or alter its natural contour, conformation or appearance.

Any exhibitor and all other parties found in violation of the Arkansas Livestock Show Association Drug Policy or the IAFE Show Ring Code of Ethics are subject to penalties as stated in the General Rules and Regulations for the Arkansas State Fair.

IDENTIFICATION (DNA) POLICY AND PENALTY

As a condition for participation in Livestock Shows at the Arkansas State Fair, every exhibitor in the market shows agrees to submit DNA validation/registration samples of any and all animals entered by exhibitor for purposes of identification. Market Shows require that the animal exhibited at the Show be the same as the animal enrolled during the nomination procedure. The Show specifically reserves the right to obtain and maintain hair and/or blood DNA samples and have analysis made on any animal entered for the competition. The conclusion reached by the testing company/laboratories shall be final, without recourse against the Show or its service providers. If the animal's identity (taken at the show) is found to differ from its validation/registration sample, then the exhibitor will forfeit any prize money and/or sale proceeds and may forfeit all rights and privileges of future participation, and will be subject to penalties as stated in the General Rules and Regulations for the Arkansas State Fair.

All incidents of misconduct will be documented by Arkansas State Fair Officials and will be reported to the National Livestock Show & Rodeo Manager's database of IAFE Show Ring Code of Show Ring Ethics offenders. Being reported in this database could impair exhibitor's ability to participate in livestock shows throughout the nation.